



world of **wienerberger**



world of **wienerberger**



# Welcome to the world of **wienerberger**

**Our Vision:** Innovative and ecological solutions  
for a better future.



**€ 4.5 bn**  
revenues (2024)



**28**  
countries



**>200**  
production  
sites



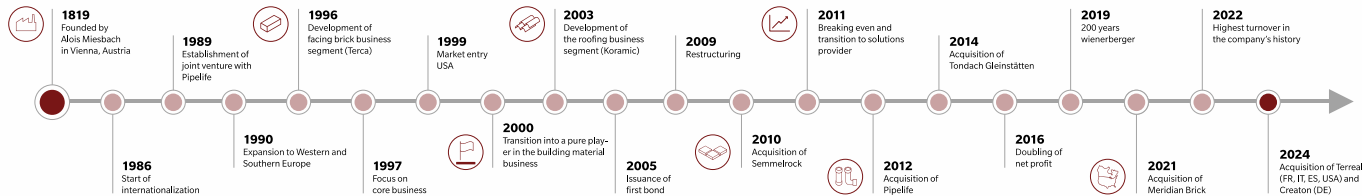
**>20.000**  
employees





# Together for a better future!

For more than 200 years we have been improving people's quality of life.





## Together for a better future!

**wienerberger** is one of the leading providers of innovative and ecological solutions for the entire building envelope in new build and renovation, as well as piping solutions for infrastructure in water and energy management.

We focus on organic growth driven by innovation, a sustainable product portfolio and clear ESG targets.





## wienerberger in Europe and India

In Europe, **wienerberger** provides innovative solutions for the entire building envelope with a wide range of backing and fair-faced bricks, roof tiles, and surface pavings. Additionally, we offer plastic and ceramic pipe solutions for water management, energy supply, and building installations.

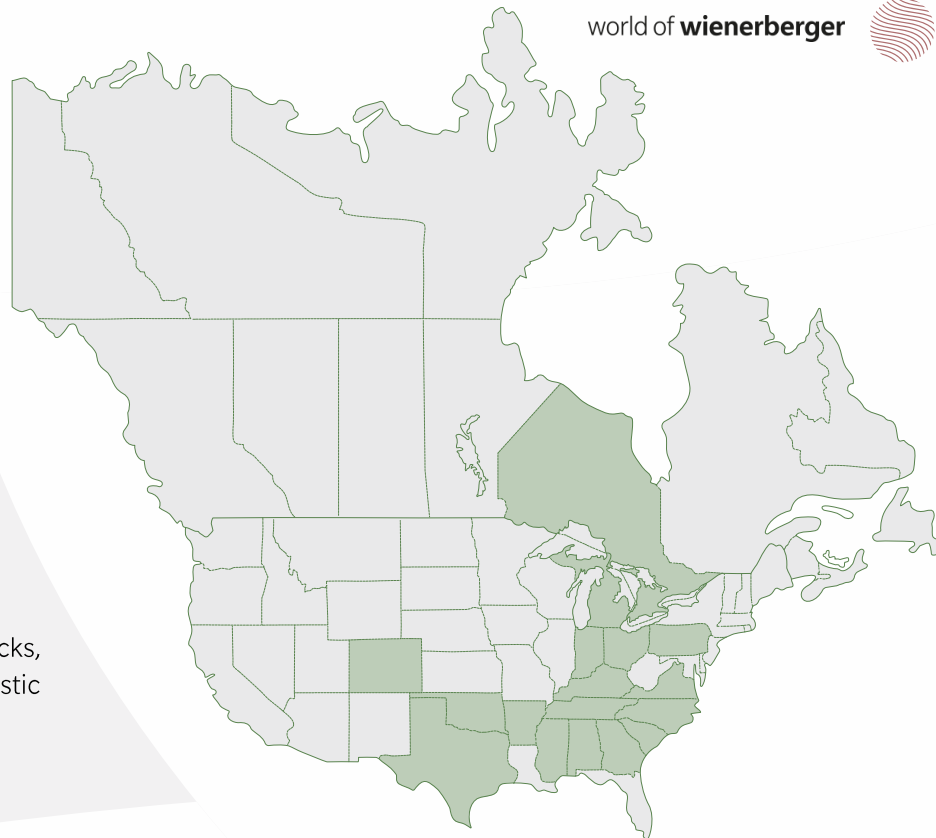
In India, the birthplace of clay brick architecture, **wienerberger** emphasizes back brick solutions.





# wienerberger in North America

In North America **wienerberger** focuses on innovative and ecological products and solutions in the field of fair-faced bricks, concrete and limestone products, clay roof tiles as well as plastic pipes for infrastructure and building installations.







world of **wienerberger**



## Solutions for the Building Envelope

Innovative and environmentally-friendly solutions for roof, wall, facade and pavers.

**wienerberger** is the world's biggest brick manufacturer, and the market leader in clay roof tiles in Europe and in concrete pavers in Eastern Europe.



**24**

countries

**107,000**

houses built



**205**

production sites

**345,000**

roofs covered

**11,200,000 m<sup>2</sup>**

surface laid/paved



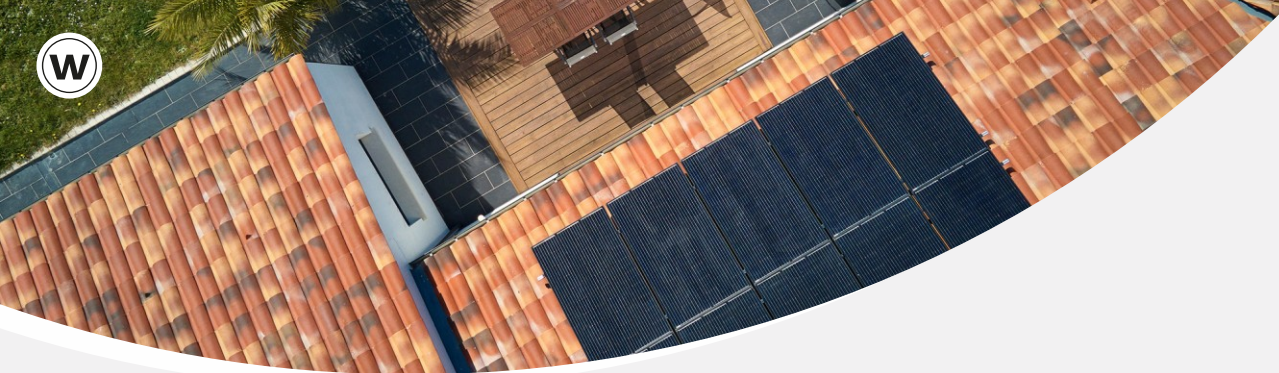
## Solutions for the Building Envelope

**From heatwaves to storms:** Extreme weather events are increasing everywhere, making it essential to adapt to climate change with climate-resilient building solutions.




Brick buildings are naturally climate resilient. Moreover, with a lifespan in excess of 100 years, and high thermal insulation values combined with excellent thermal storage capacity, wall systems made of clay reduce the overall impact buildings have on the environment.

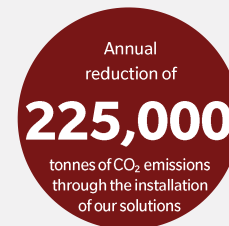
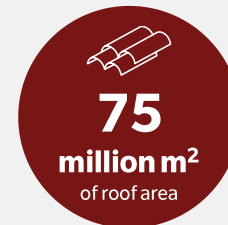






## Value-creating growth acquisition: Tereal

-  **wienerberger** strengthens its position as a leading European pitched roof expert for innovative roof and solar solutions
-  Acquisition includes Tereal business in France, Italy, Spain and the USA as well as Creaton in Germany
-  Expansion of business activities in the refurbishment and renovation market with great growth potential





# Infrastructure Solutions for Water and Energy Management

Innovative pipe solutions for infrastructure, building and agriculture.

Hidden behind walls, in floors, under the ground or on the seabed – you might not be able to see our solutions, but they are always part of your life.



**18**  
countries



**36**  
production sites

**675,000** km  
pipes laid

equal to  
**>17**  
trips around  
the world





# Infrastructure Solutions for Water and Energy Management

Complete solutions from a single source help minimize leakage losses, improve potable water management in densely populated areas, plan pipeline maintenance cycles more efficiently and derive the greatest possible benefit from digitalization.





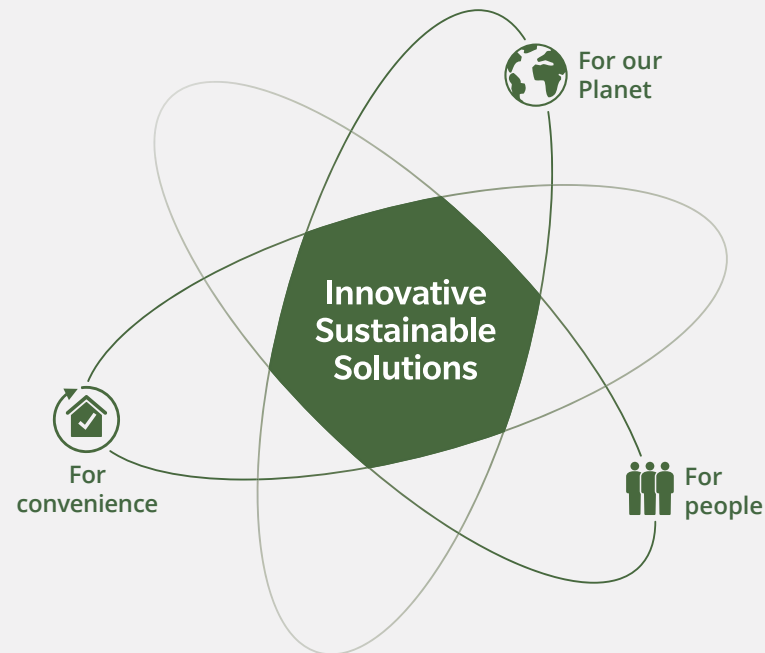






# We care for a better tomorrow




We improve people's quality of life and build  
a better world for future generations.





## We supply what others really need!

### Our solutions:




-  Enable energy-efficient, healthy, climate-friendly, and affordable living worldwide
-  Save the valuable resource water by minimizing pipeline losses, facilitating the planning of maintenance cycles for pipelines, and leveraging digitalization
-  Are innovative, smart, ecological, and easy to use





# From protective to multi-functional roof

Sustainable roof systems of the future


-  High-quality, innovative and ecological roof systems
-  Innovation towards climate-neutral buildings: use of the entire roof to generate energy
-  Leading in the field of roof technology, photovoltaics, roof renovation and solar energy



## **Company Wioniq**

### Pools smart solution activities

Advancing the digitalization of the water and energy sector.

-  Combining the expertise of Smart Solution Companies Inter Act, I-Real (NL), Wideco (SE), and Slatek (FI)
-  Accelerating data-driven innovations in infrastructure and building management
-  Enabling precise control, predictive maintenance, and cost savings



## Uttendorf, AT:

### Europe's most sustainable brick production

Driving forward the transformation of the industry

- Equipped with the world's largest industrial electric kiln
- Powered by green electricity, including from its own photovoltaic system
- Reduces CO<sub>2</sub> emissions from production by around 90%





## From circular pipes to smart monitoring

### Sustainable energy and water management



Circular drip irrigation systems are designed to maximize yields with minimal water use in agriculture and can be removed, cleaned and recycled after harvesting.



Smart monitoring via tablet simplifies data collection and analysis as well as the control of water and waste water networks.



## From rain to drain: We offer complete solutions

Rainwater management is becoming increasingly important:

- Water is becoming scarcer.
- Increasing surface sealing in cities leads to heat stress.
- Groundwater levels are falling.
- Increasing weather extremes increase the risk of flooding.

Whether against flooding or water shortages: **wienerberger** offers modular systems that absorb, drain, clean, infiltrate and/or temporarily store water on the surface as required.



# Shaping the Future with Strong Values

**Trust**  
grounds us.

Trust is the foundation  
for successful interpersonal  
relationships.

**Passion**  
drives us.

Passion is the driving  
force behind our innovative  
capability, our growth and our  
development as an  
international group.

Respect, showing  
appreciation and accepting  
responsibility – for people and  
the environment.

**Respect**  
connects us.

We break free from  
entrenched ways of thinking  
to create something new –  
we are never satisfied with  
the status quo.

**Creativity**  
brings us to life.





## Diversity

**>20.000** employees

**28** countries

**>90** nationalities

**>30** languages spoken

**15%** female employees  
in senior management

**34%** female employees in  
white-collar positions



## Training & Benefits

**>24** training hours per employee / year

---

**Group-wide** training and development programs

---

**907.000** shares for employees



world of **wienerberger**



## wienerberger Sustainability Program

Our commitment to a future worth living and a healthy planet is reflected in our comprehensive three-year Sustainability Program.





# wienerberger Sustainability Program 2023-2026

Sustainability has always been an integral part of **wienerberger's** corporate strategy. Our commitment to a future worth living and a healthy planet is reflected in our comprehensive three-year Sustainability Program.

The Sustainability Program 2023-2026 contains even more ambitious social and sustainability objectives than ever before.





## SOCIAL TARGETS 2026



### Diversity & Inclusion

Development and implementation of inclusion and diversity action plan in all countries (2023 – 2026)

Every action plan will include an equal pay and equal opportunity policy



### Health & Safety

**20,000**

Visible leadership hours per year (2023 – 2026)



### Training & Development

**18 hrs**

of training per employee per year (2023 – 2026)

**500**

apprentices cumulatively trained (2023 – 2026)

**30,000**

cumulative number of training hours for installers (2023 – 2026)



### Societal Commitment

**200**

housing units per year built with our products for people in need in our local markets

## ENVIRONMENTAL TARGETS 2026



### Decarbonization and Energy Mix

**– 25%**

reduction of CO<sub>2</sub> emissions scope 1&2 (2020 – 2026)

**– 10%**

reduction of CO<sub>2</sub> emissions scope 3 (2022 – 2026)

**15%**

of renewable energy used in own operations (2023 – 2026)



### Circularity

**> 80%**

of sales from highly durable products (>100 years)

**> 90%**

of products sold are recyclable and/or reusable (2022 – 2026)



### Biodiversity

**10%**

improvement of fauna, through implemented biodiversity plans for all production plants (2023 – 2026)

At least one **biodiversity ambassador**

for each location worldwide

**100,000**

trees planted, equaling to one tree per employee each year (2022 – 2026)



### Revenue from products supporting Net Zero Buildings

**75%**

of total revenue coming from building products contributing to Net Zero Buildings



### Water management

**35 million m<sup>3</sup>**

of water harvested, retained and saved through our products in infrastructure and agriculture (2023 – 2026)

**– 15%**

reduction of water consumption in own operations (2023 – 2026)



### Waste management

**– 15%**

reduction of waste in own operations (2023 – 2026)



# The wienerberger Equity Story

Why invest in  
**wienerberger?**

- Strong commitment to ESG through innovative, ecological solutions for today and tomorrow
- Stable earnings growth for shareholders through innovation, continuous efficiency-enhancing measures and acquisitions
- Strength through diversification in solution brands, markets and business models







1

## Roof Solutions

- Sturmfix
- Snow guard
- Solar roof tile
- Solar panel system
  - Underlay
- Membrane for flat roof

[back](#)

The background is a stylized illustration of a blue building facade. On the left, a circular inset with a dark blue border contains several orange rectangular blocks arranged in a staggered pattern, representing clay blocks. To the right of this inset are two white-framed windows with red cross-shaped mullions. The sky above the building is a lighter blue with dark blue rectangular panels. The overall style is clean and modern.

2

## Clay block Solutions

- Clay block systems for external walls
- Clay block for internal walls
- Ceramic accessories
- Non-ceramic accessories
- Prefabricated interior brick walls

[back](#)



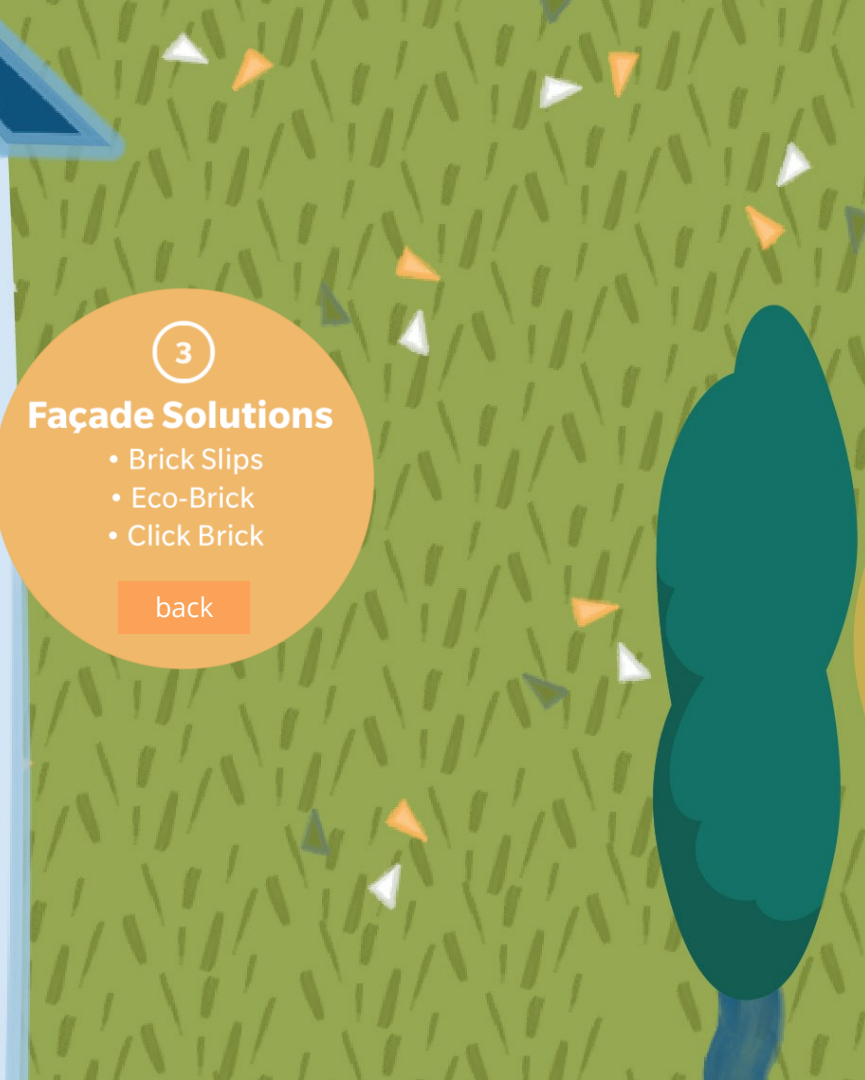


3

### Façade Solutions

- Brick Slips
- Eco-Brick
- Click Brick

[back](#)





4

## Inhouse Solutions

- Heating & Cooling
- Hot and cold water installations
  - Wastewater
  - Rainwater
  - Potable water
- Electrical/cable protection
  - Ventilation
  - Gas pipes

[back](#)



5

## Landscaping Elements

- Concrete pavers
- Penter clay pavers
- Landscaping Solutions

[back](#)



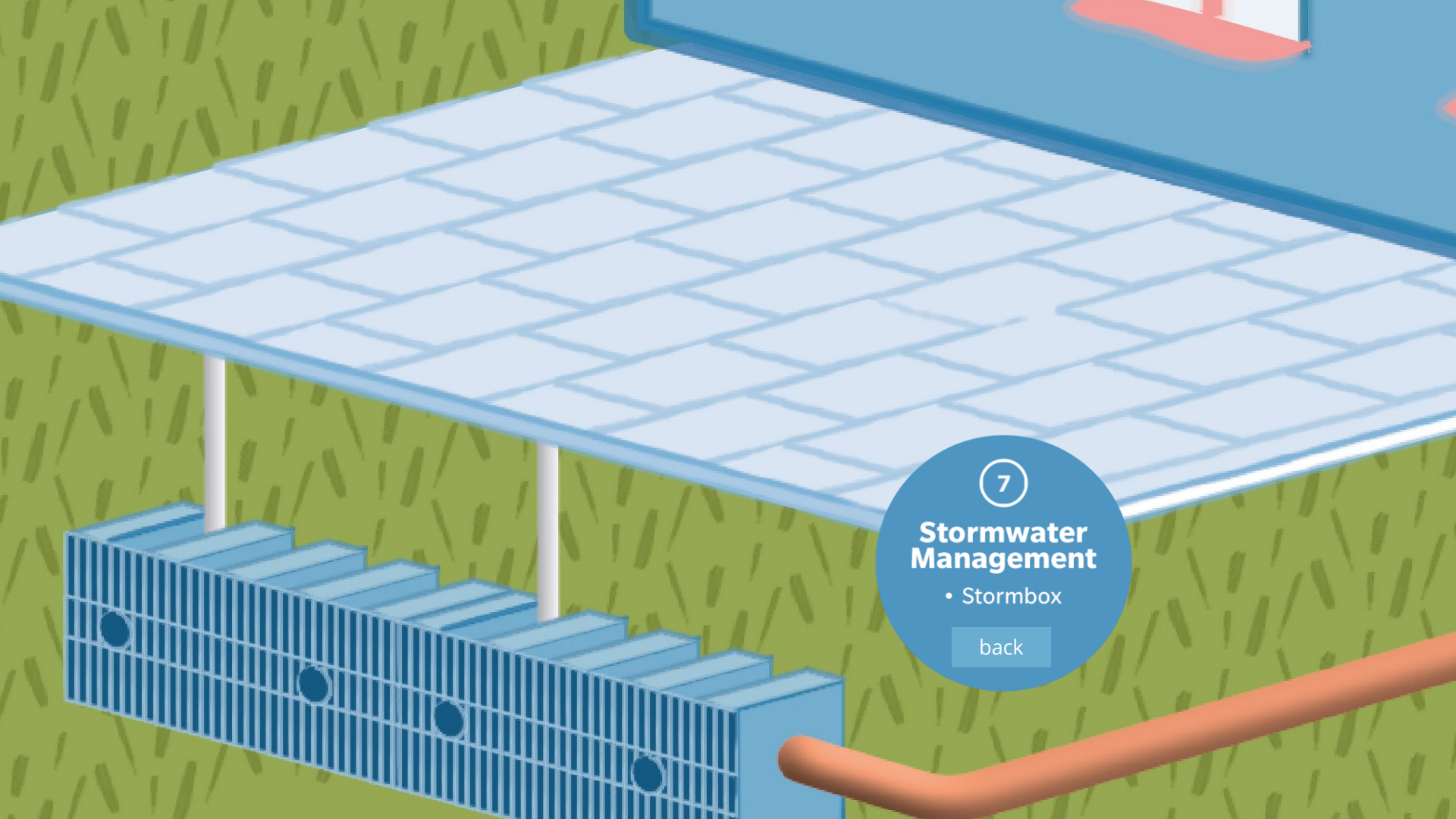


6

## Wastewater Solutions

- Wastewater pipe systems
  - Shafts
- Wastewater pipe accessories

[back](#)

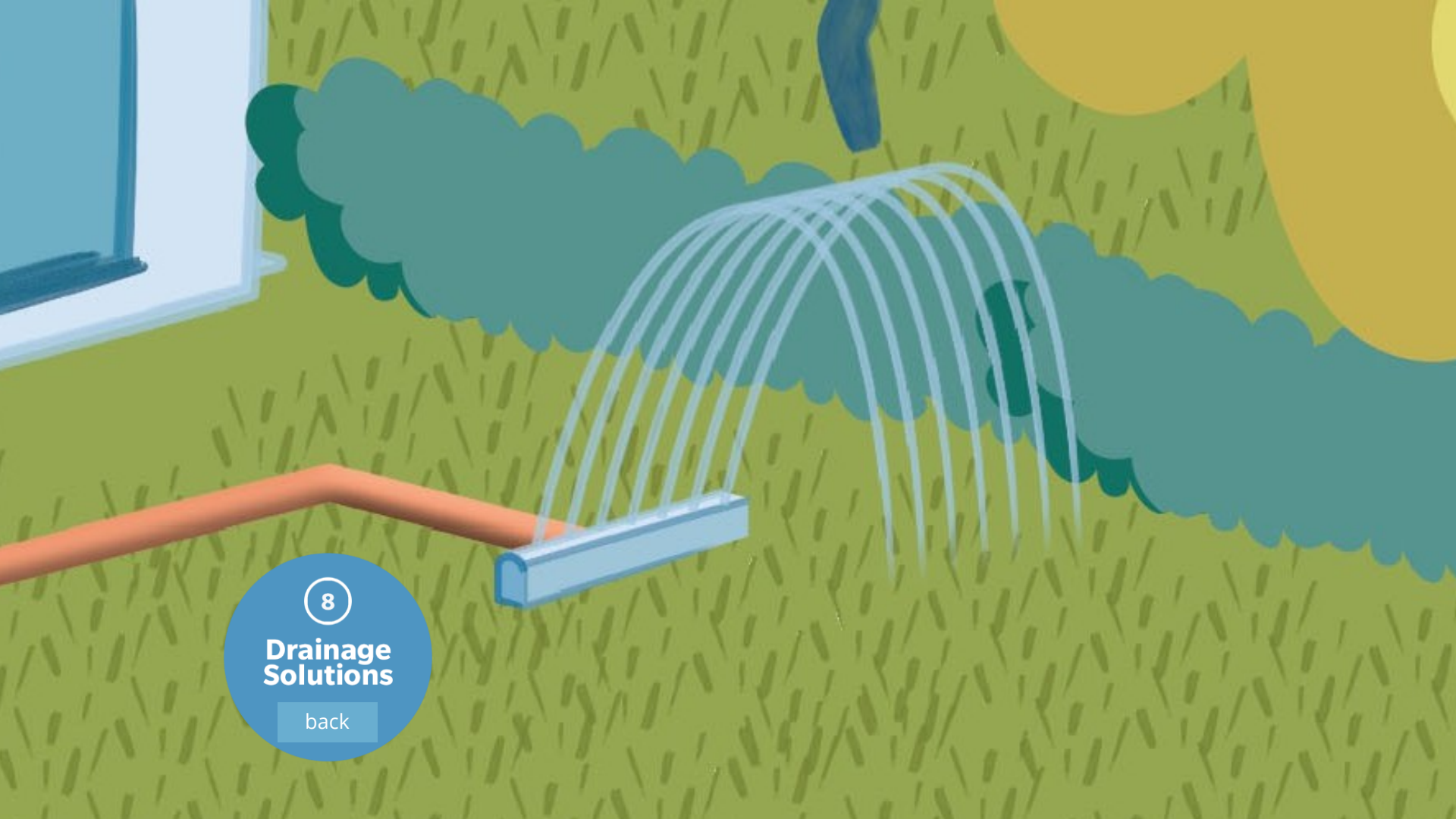


7

## Stormwater Management

- Stormbox

[back](#)



8

**Drainage  
Solutions**

[back](#)



An isometric illustration of a city street scene. The street is paved with light blue rectangular pavers. On the left, a white building with arched windows and red doorsteps is visible. A person is walking on the sidewalk. In the foreground, there are several planters: a large one with green bushes and a yellow flower, and smaller ones with green grass and yellow flowers. A person is sitting on the edge of the large planter. On the right, a person is riding a bicycle on the street. The background features more trees and buildings.

9

## Pavers

- Concrete pavers
- Permeable clay pavers

[back](#)

An isometric illustration of a construction site. In the background, a blue crane with an orange bucket is positioned near a wall. Several stacks of orange bricks are placed on yellow pallets. A series of blue rectangular blocks are arranged in a line, with green wavy lines representing climbing plants growing over them. The foreground features a dark blue textured ground, green grass on the left, and large yellow bushes on the right.

10

## Climbing plants

[back](#)



11

## Orchard

[back](#)







12

## Compost

[back](#)



13

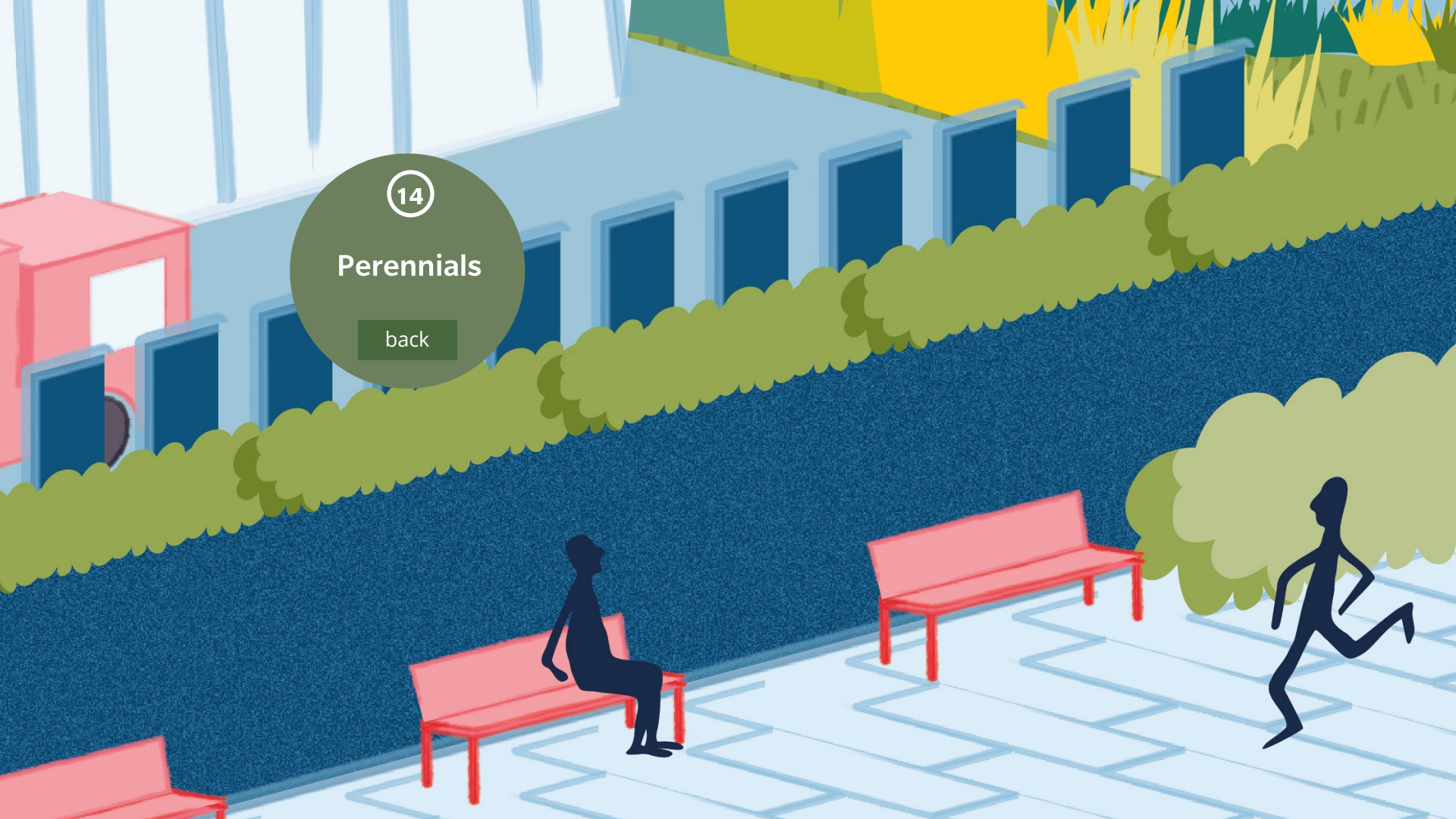
**Nesting places  
and insect hotel**

[back](#)

14

## Perennials

[back](#)







15

## Façade greenery

[back](#)

16

## Recultivated clay pit

[back](#)

